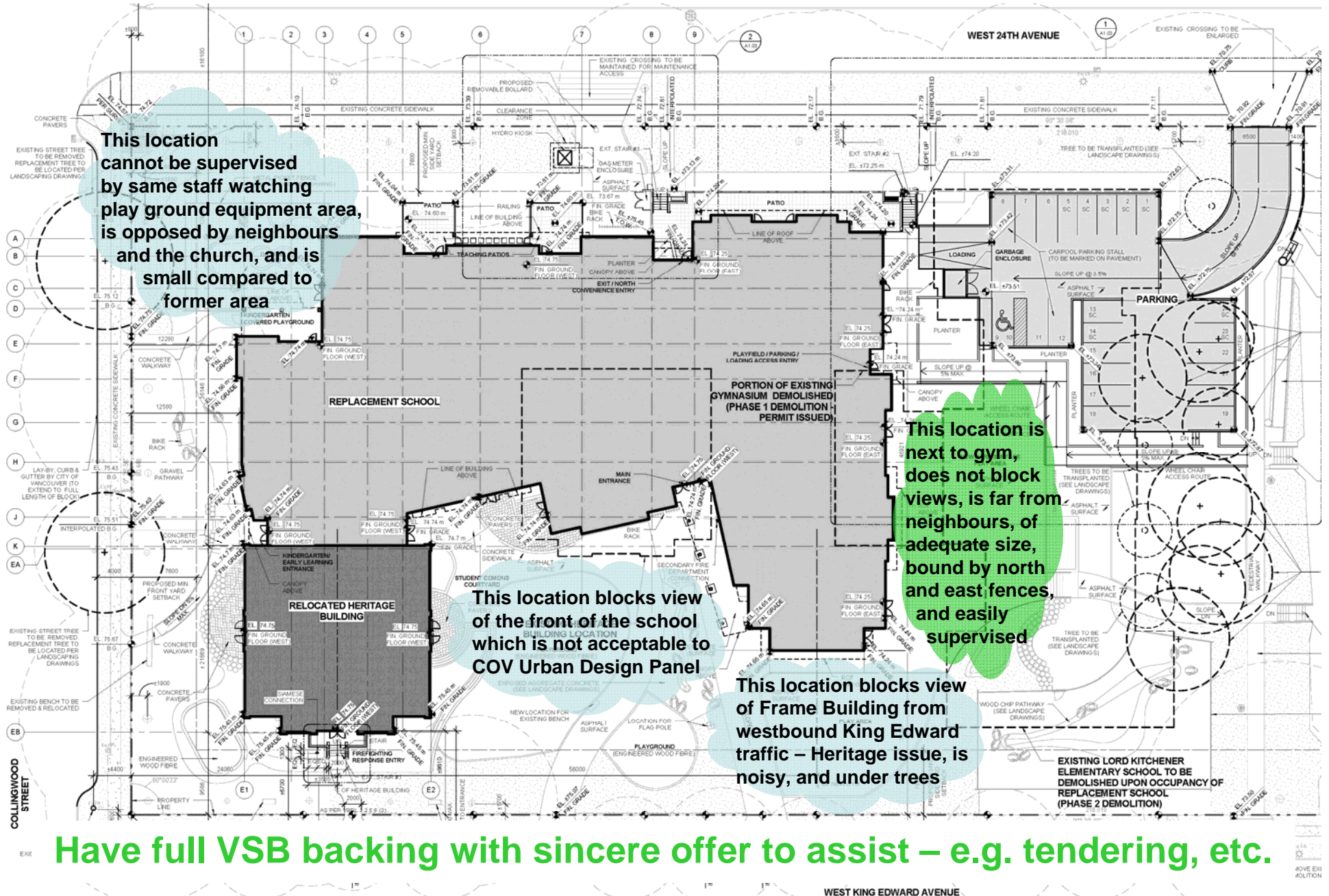


Outdoor Covered Play Area Considerations

- Location
- Endorsement
- Size
- Design
- Schedule
- Cost and Funding

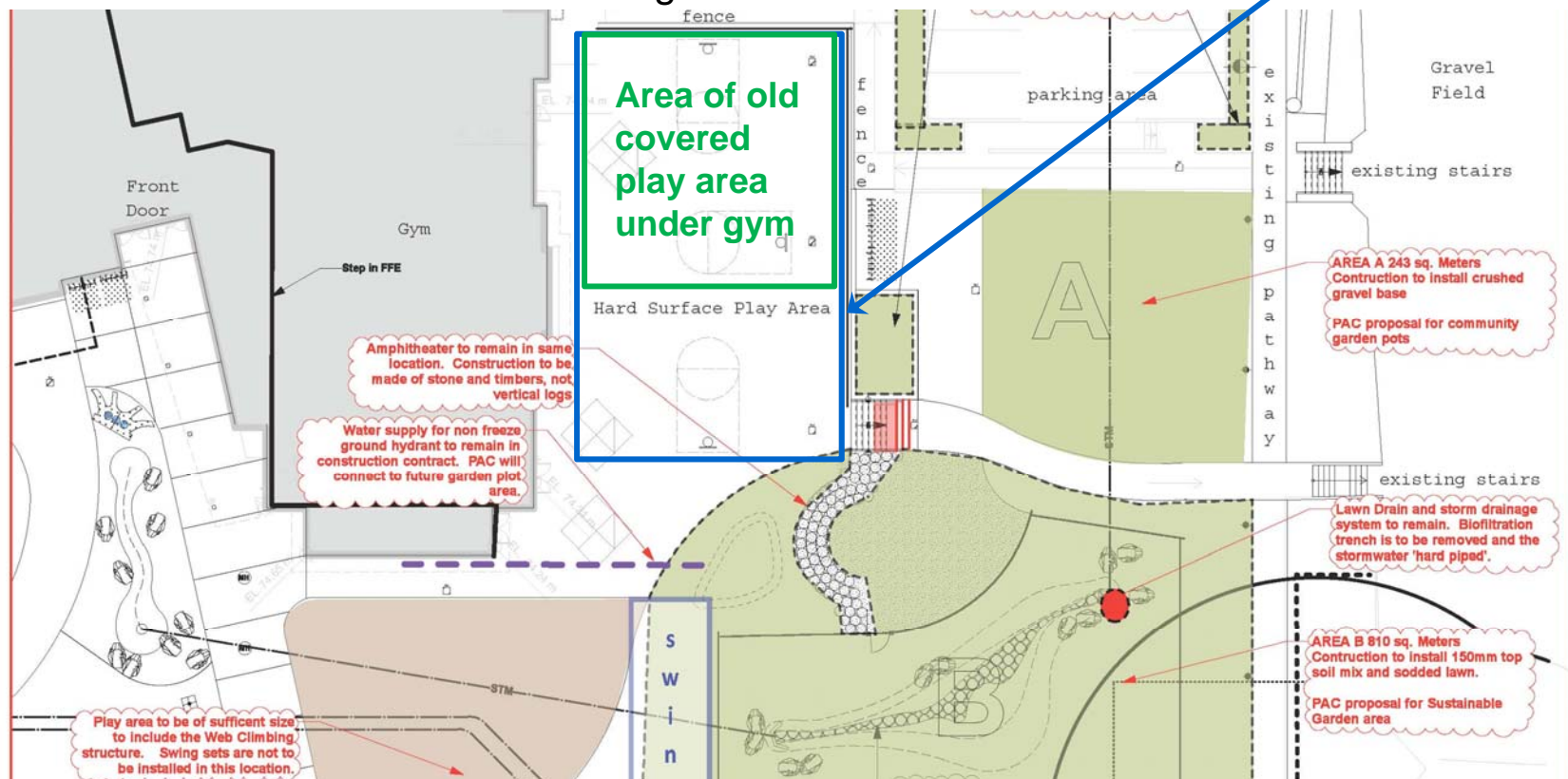
Location of Covered Play Area & VSB Endorsement



Have full VSB backing with sincere offer to assist – e.g. tendering, etc.

Outdoor Covered Play Area Approximate Footprint

- Secured extra 1,000 sq. meters of gym and multi-purpose area, \$2.9M in MOE budget, via Neighbourhood of Learning (NOL) initiative that PAC pushed in 2007–09
- NOL entails use of school non-classroom facilities outside of regular school hours
 - » Especially sports facilities, including adult size basketball outdoor hard surface play area replacing former hard surface area for basketball in front of Frame Building



Designs of Comparable Outdoor Covered Areas – 1



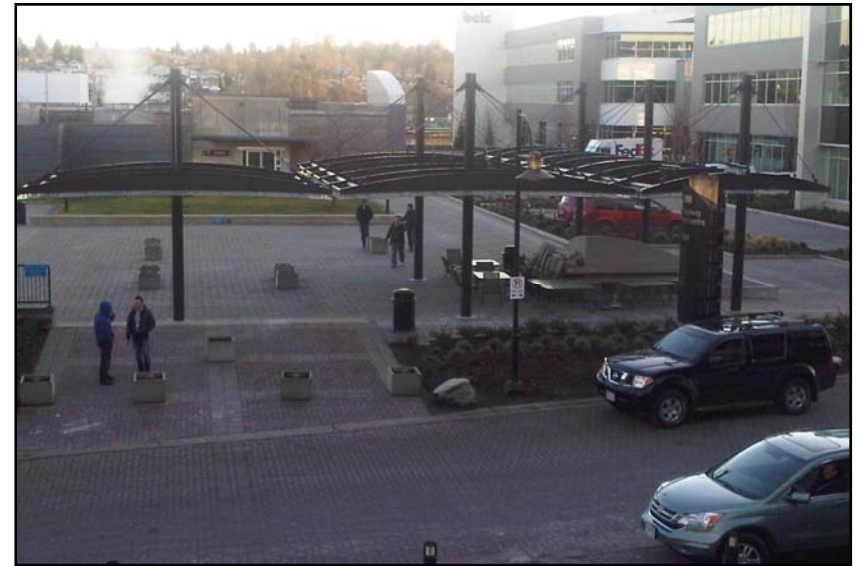
Designs of Comparable Outdoor Covered Areas – 2



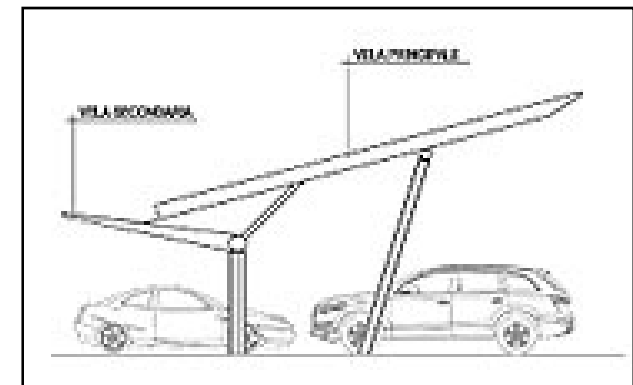
Designs of Comparable Outdoor Covered Areas – 3



Broadway Tech Centre Glass Covering at Broadway & Renfrew



Other outdoor covered area examples



http://www.solardaily.com/reports/FLEXA_The_Photovoltaic_Car_Park_Canopy_999.html

Schedule for Outdoor Covered Play Area Initiative

- Need to synchronize with construction of hard surface play area which will be around Feb-2013
 - » Cost of covered area will be prohibitive if its construction does not start before hard surface play area construction and adjacent landscaping
- Need City of Vancouver (COV) Building Permit (BP) which takes 3-4 months so we must apply for BP around Oct-2012
- Need COV Development Permit (DP) to get BP and DP takes about 3-4 months so we must apply for DP around June-2012
- Need VSB written endorsement for DP application and VSB has stipulated design must be acceptable and funding in place before endorsement is given so we must complete a high level design and fund raising around June 2012
- **Need time to raise money so we must start fund raising now!**

Cost and Funding of Outdoor Covered Play Area

- Cost will depend on design which is still to be determined
 - » Rough estimate range is a high 5-figure dollar amount for a basic design to a low 6-figure dollar amount for a more comprehensive structure
- Launching fund raising effort now (if PAC and parents agree)
 - » Soliciting Dunbar Residence Association (DRA) support and money
 - Upcoming DRA community centre seismic upgrade will increase school use
 - Gym will serve as a post earthquake shelter area and a covered area next to the gym would be very advantageous after an earthquake
 - » Donation tax receipts will be issued
 - » Donors commemorative plaque will be erected at site
- **Creating a fundraising committee – looking for volunteers!**